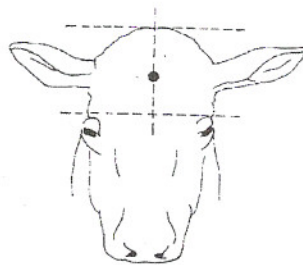


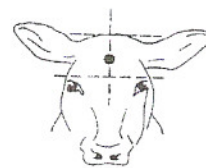
# Drawings and description of specified points on animal's head where a mechanical slaughtering device should be placed in order to execute stunning shot

## **Cattle (except bulls and calves)**

The muzzle should be placed in the right angle towards the frontal bone at the place which is situated in the middle between the highest point of the skull and the line connecting eyes.



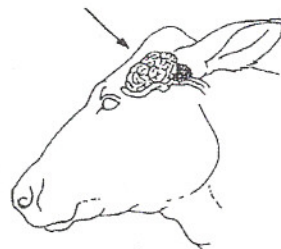
Side view (Cattle)



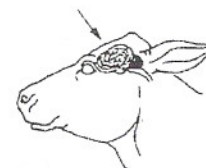
Side view (Calves)

## **Bulls**

The muzzle should be placed in the right angle towards the frontal bone at the place which is situated in the middle between the highest point of the skull and the line connecting eyes. The device should be placed to animal's forehead firmly, max. 1cm from the fornix edge in the middle of the skull.



Front view (Cattle)



Front view (Calves)

## **Calves**

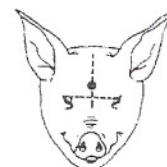
The muzzle should be placed in the right angle towards the frontal bone nearer to the line connecting eyes than in case of the cattle.

## **Pigs (except boars)**

The muzzle should be placed in the right angle towards the frontal bone, about 2.5cm above the line connecting eyes.



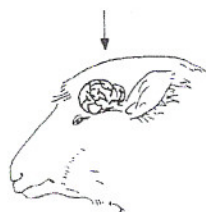
Side view (Pigs)



Front view (Pigs)

## **Boars**

The muzzle should be placed in the right angle towards the frontal bone, about 5cm above the line connecting eyes towards one side of the fornix in the middle of the skull.



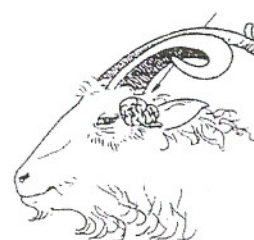
Side view (Hornless sheep)



Front view (Hornless sheep)

## **Sheep**

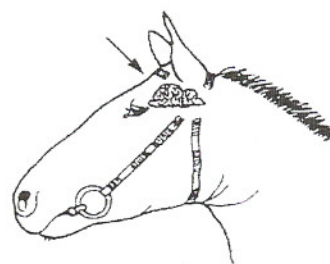
Hornless sheep – the muzzle should be placed on the highest point of the skull and it is aimed at the jaws.  
Horny sheep – the muzzle should be placed right behind the fornix between horns and it is aimed at chops.



Side view (Horny goats)

## **Goats**

Hornless goats – the muzzle should be placed on the highest point of the skull and it is aimed at the jaws.  
Horny goats – the muzzle should be placed right behind the fornix between horns and it is aimed at chops.  
Kids - the muzzle should be placed in the right angle towards the frontal bone in the same way as in case of calves.



Side view (Horses)

## **Horses**

The muzzle should be placed in the right angle towards the frontal bone above the intersection point of the lines connecting eyes and ears.